

# PROGRAM OF ALL INCLUSIVE CARE FOR THE ELDERLY (PACE)

**Aimee Reimann**  
Vice President - HCBS



# What is PACE?

**Comprehensive, fully integrated health care delivery system for the frail, older adults**



# What is PACE?

- ▶ **Community-based**
- ▶ **Comprehensive (medical and social services)**
- ▶ **Capitated (managed care)**
- ▶ **Coordinated**



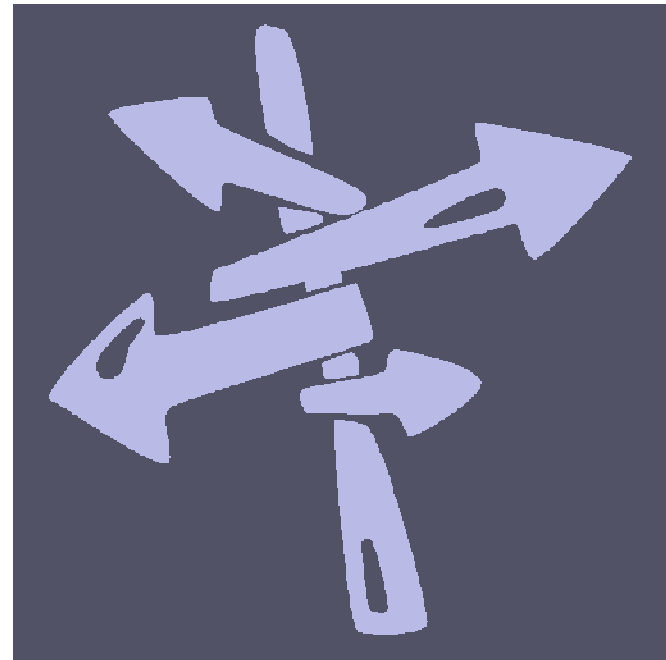
# Why PACE?

- ▶ **Honors the desires of the frail elderly**
  - ▶ To stay in familiar surroundings
  - ▶ To maintain autonomy
  - ▶ To maintain a maximum level of physical, social and cognitive function



# The Current System

- ▶ **Fragmented**
  - ▶ Primary Care
  - ▶ Acute Care
  - ▶ Institutional Care
  - ▶ Home Care



# The Current System

- ▶ **Acute-care focused**
- ▶ **Expensive**
- ▶ **Inefficient**



# Focus on the Frail

- ▶ **55 years of age or older**
- ▶ **Living in PACE service area**
- ▶ **Certified as needing nursing home level of care**
- ▶ **Can be safely cared for in the community**

# Serves Triple Eligibles

- ▶ **Poor – Medicaid**
- ▶ **Old – Medicare**
- ▶ **Frail – Nursing home eligible**

# Comprehensive, Coordinated, Continuous Care

- ▶ **Interdisciplinary Team provides person-centered care:**
  - ▶ 24 hours a day
  - ▶ 7 days a week
  - ▶ 365 days a year
- ▶ **All Medicare/Medicaid services **PLUS** community long-term care service**

# Services

- ▶ **Physician care**
- ▶ **Nursing care**
- ▶ **Vision and dental care**
- ▶ **Audiology**
- ▶ **Podiatry**
- ▶ **Psychiatric care**
- ▶ **Physical, Occupational, Speech and Recreational Therapy**

# Services (*continued*)

- ▶ **Prescription drugs and durable medical equipment**
- ▶ **Preventative services and education**
- ▶ **Laboratory services and diagnostic testing**
- ▶ **Emergency medical services**
- ▶ **Ambulance services**
- ▶ **Hospital inpatient care as needed**

# Services (*continued*)

- ▶ **Nursing home care as needed**
- ▶ **Recreational activities**
- ▶ **Social services**
- ▶ **Nutritional counseling and meals**
- ▶ **Transportation**
- ▶ **Caregiver respite**
- ▶ **Home health care and personal care**
- ▶ **End-of-life care**

# Integrated, Capitated Financing

- ▶ **Strong incentives to proactively address each individual's person-specific needs improve health and reduce the need for acute care and long-term institutionalization**

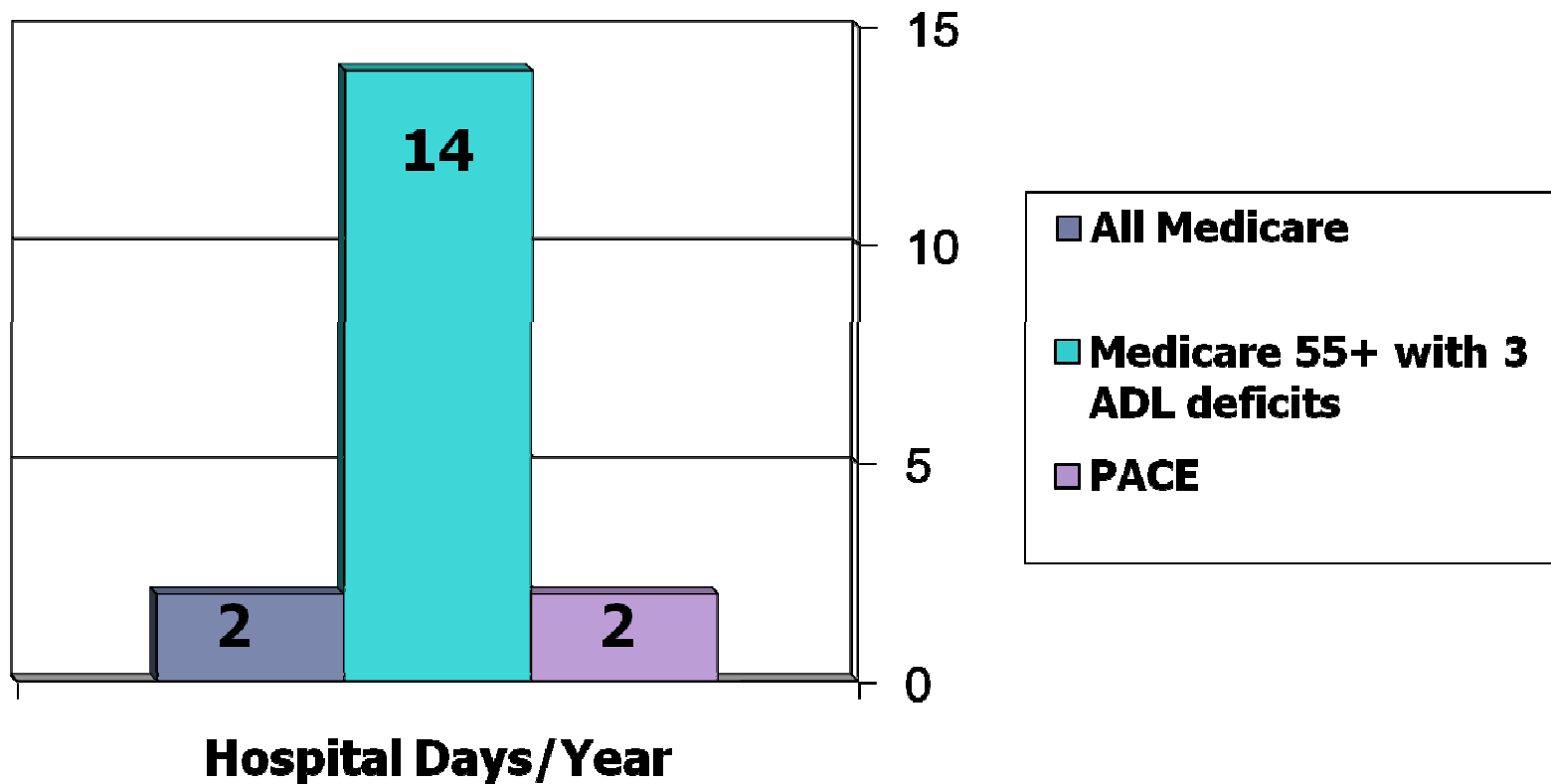
# Accountable

- ▶ **Fully Accountable for the quality and cost of all the care provided both directly and through contracted providers, as well as, not providing services.**

# Prevention and Timely Intervention

- ▶ **Costliest beneficiaries in both the Medicare and Medicaid programs.**
- ▶ **Improve the care individuals receive in fee-for-service by emphasizing preventative, primary and community based care**

# Hospitalization Rates



Wieland, JAGS 2000; 48:1373-1380

# Funding



## ▶ **Capitated, pooled financing**

- ▶ Medicare capitation rate adjusted for the frailty of the PACE enrollees
- ▶ Integration of Medicare, Medicaid and private-pay payments

# Capitation Rates

## **A typical capitation rate PMPM for North Carolina** *(per member per month)*

Medicare	\$ 2,564
Medicaid	<u>\$ 3,310</u>
Total	\$ 5,874

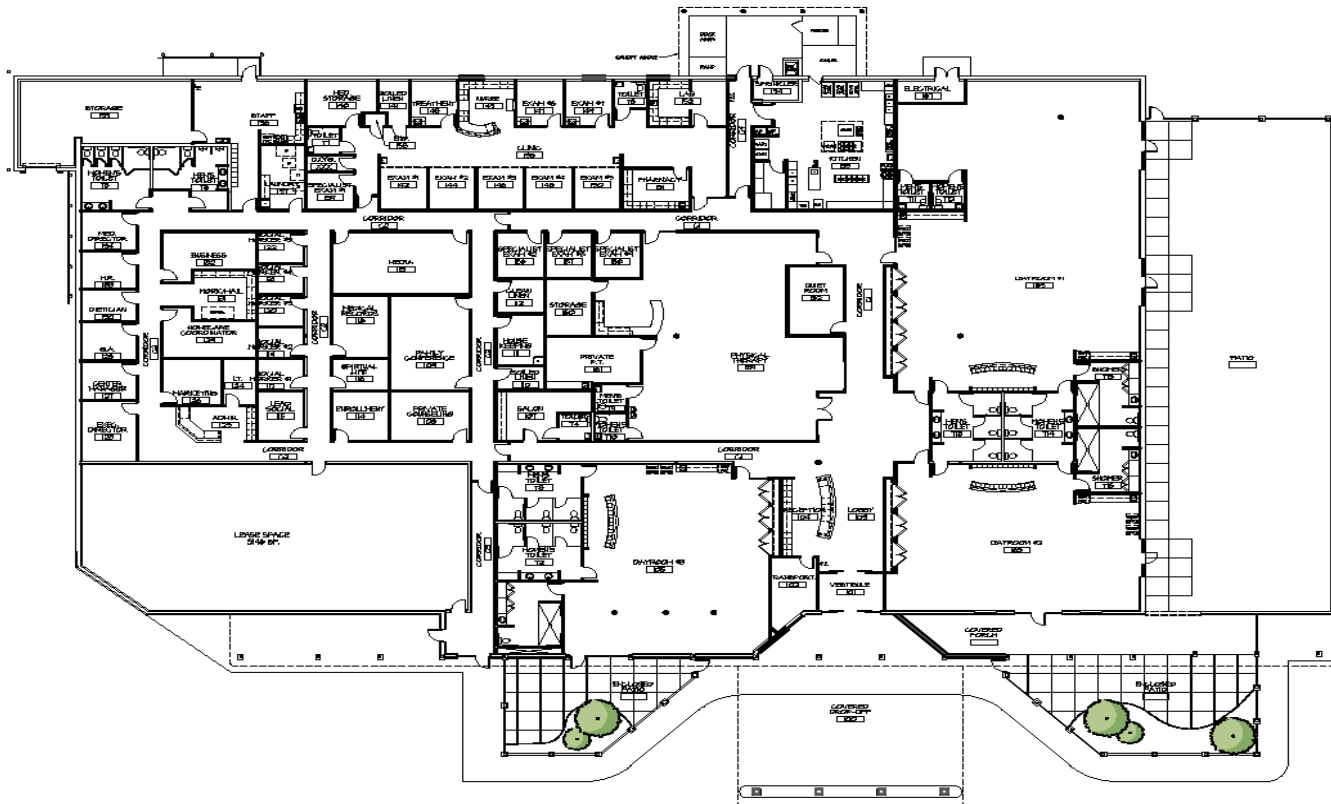
\*does not include ESRD

# Current Locations

- ▶ **81 PACE providers in 29 states**
- ▶ **Four currently operating in NC**
  - ▶ Elderhaus in Wilmington
  - ▶ Piedmont SeniorHealth Care in Burlington
  - ▶ LIFE St. Joseph's of the Pines in Fayetteville
  - ▶ PACE of the Triad in Greensboro
- ▶ **Six under development in NC**
- ▶ **Four in exploratory phase in NC**

# Carolina SeniorCare

802 East Center Street, Lexington



# Service Area

- ▶ **Carolina SeniorCare will serve all of the zip codes in the following counties**
  - ▶ Davidson
  - ▶ Rowan
  - ▶ Davie
  - ▶ Iredell



# PACE Information

- ▶ **National PACE Association**

- ▶ <http://www.npaonline.org>

- ▶ **Centers for Medicare and Medicaid**

- ▶ <http://www.cms.hhs.gov/pace/>

- ▶ **NC Division of Medical Assistance**

- ▶ <http://www.dhhs.state.nc.us/DMA/pace.html>

# Questions?

**Aimee Reimann**  
**VP Home & Community Based Services**  
[areimann@uchas.org](mailto:areimann@uchas.org)  
**828 465-8017**

